

# INSTALLATION INSTRUCTIONS - REAR ROLL CONFIGURATION

29-NOV-2016  
REV. 2

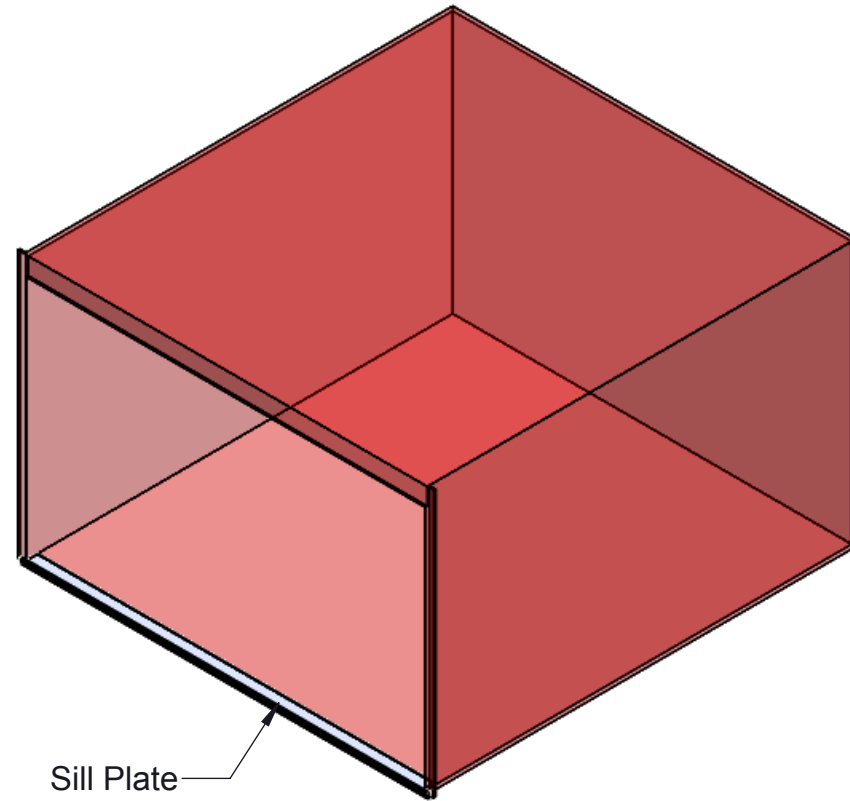


Fig. 1

## Step-1: INSTALL SILL PLATE

Install Sill Plate (optional) as shown in Fig.1. Otherwise proceed to Step-2.

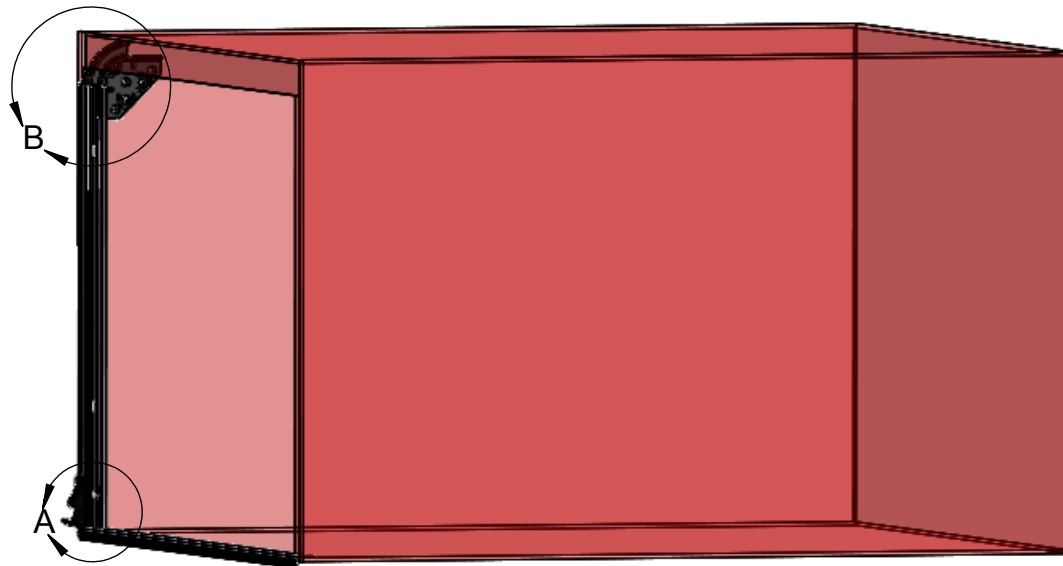
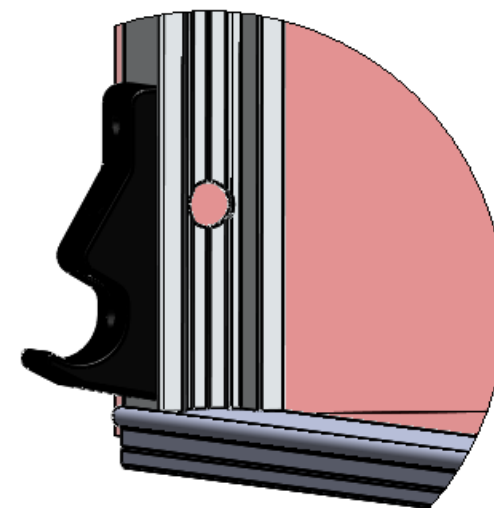


Fig. 2

## Step-2: INSTALL CORNER TRACK RADIUS ON LEFT SIDE

Place the Left Side Frame flush to the Sill Plate/Floor along with Corner Track Radius and mark holes on compartment wall using holes on Corner Track Radius and Side Frame as a guide (Fig. 2, DETAIL A & DETAIL B). Drill the holes. Secure only the Corner Track Radius.



DETAIL A  
SCALE 1 : 2

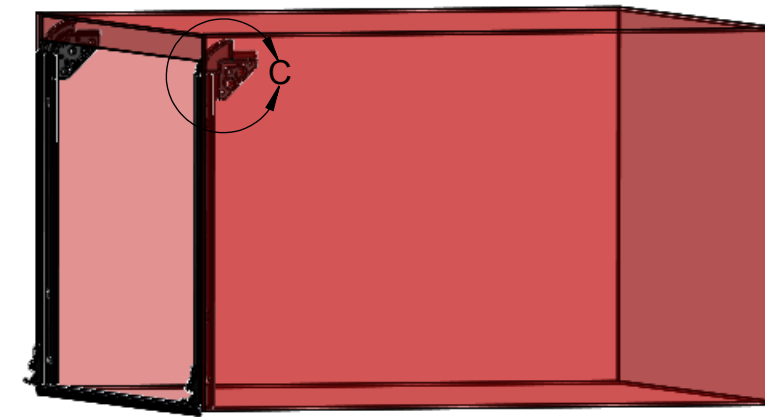
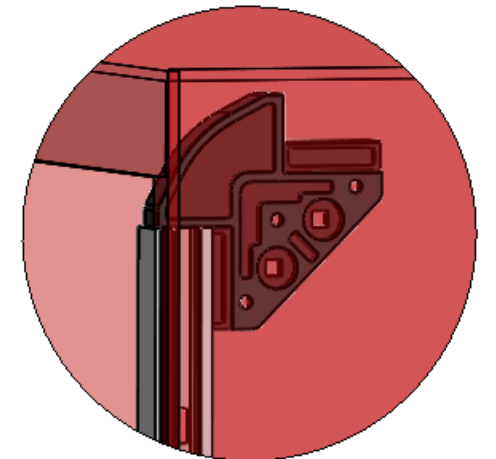
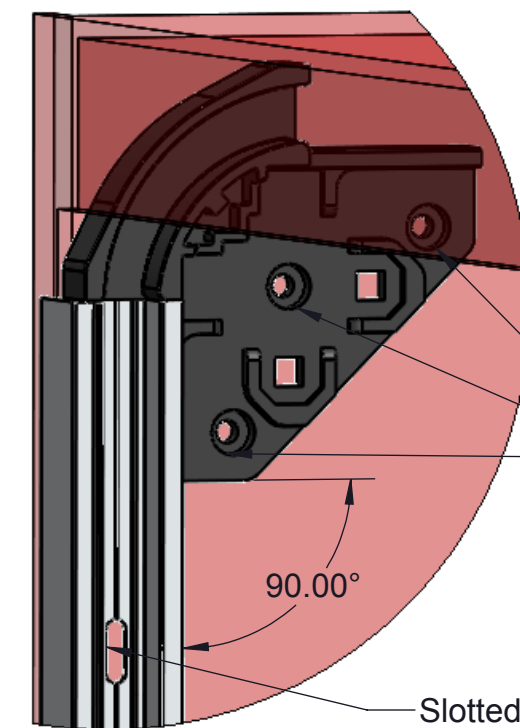


Fig. 3



DETAIL C  
SCALE 1 : 4

**Step-3: INSTALL CORNER TRACK RADIUS ON RIGHT SIDE**  
Place the Right Side Frame flush to the Sill Plate/Floor along with Corner Track Radius and mark holes on compartment wall using holes on Corner Track Radius and Side Frame as a guide (Fig. 3 & DETAIL C). Drill the holes. Secure only the Corner Track Radius.



DETAIL B  
SCALE 1 : 2.25

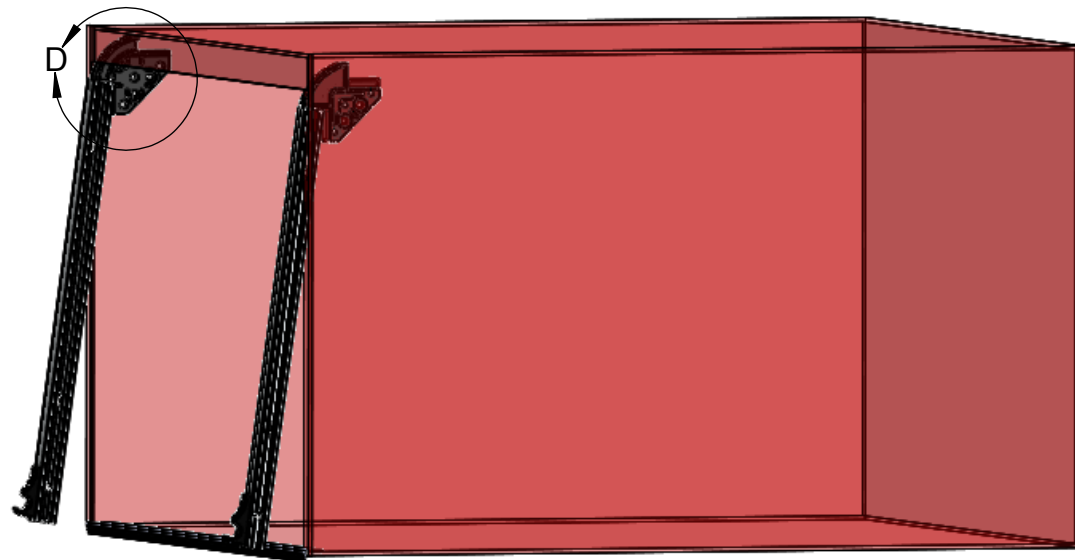
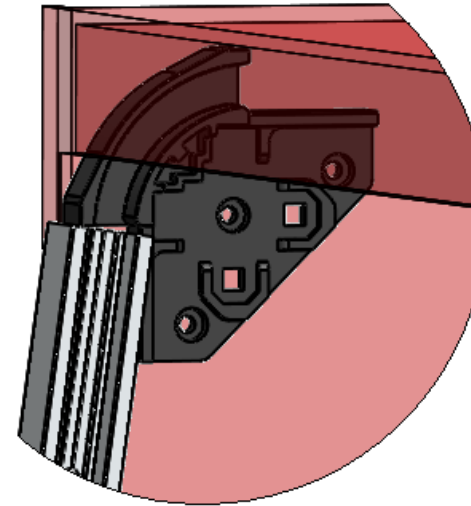


Fig. 4



DETAIL D  
SCALE 1 : 3

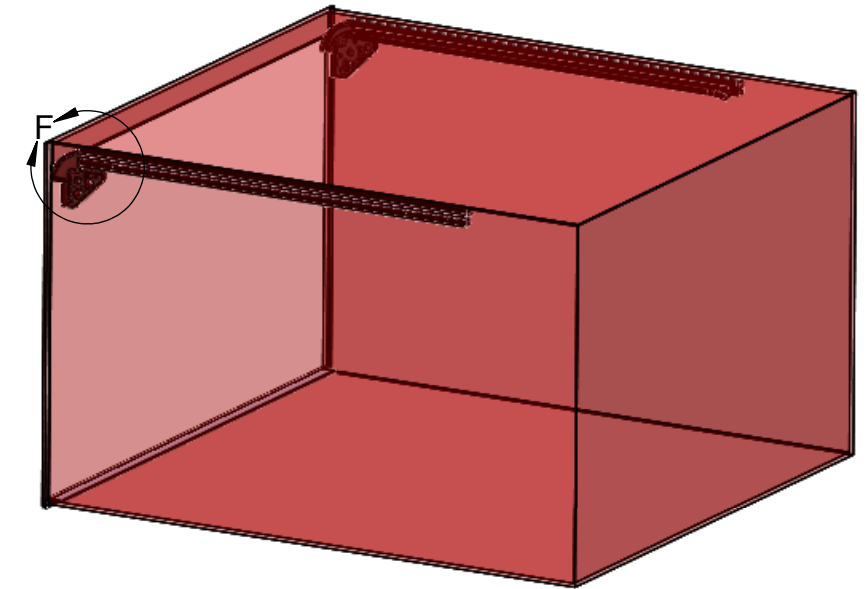


Fig. 6

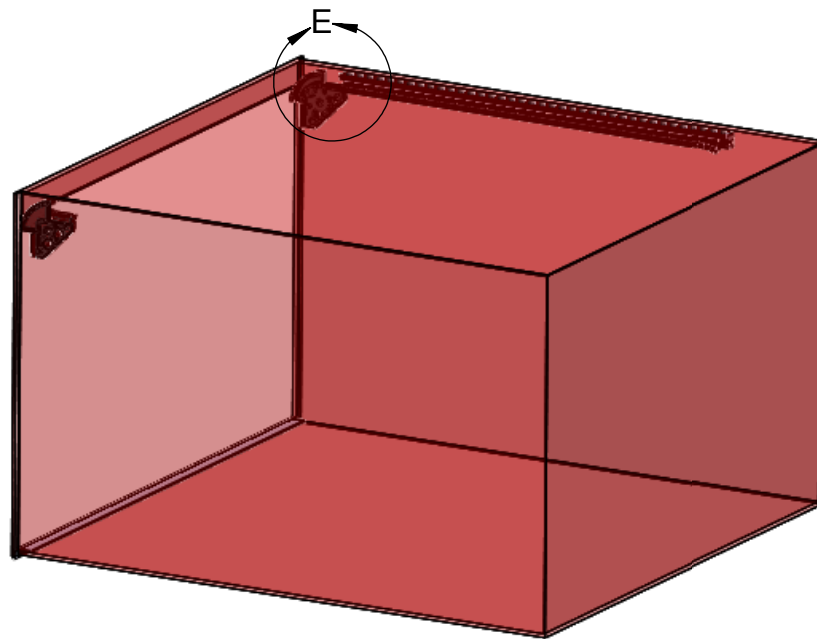
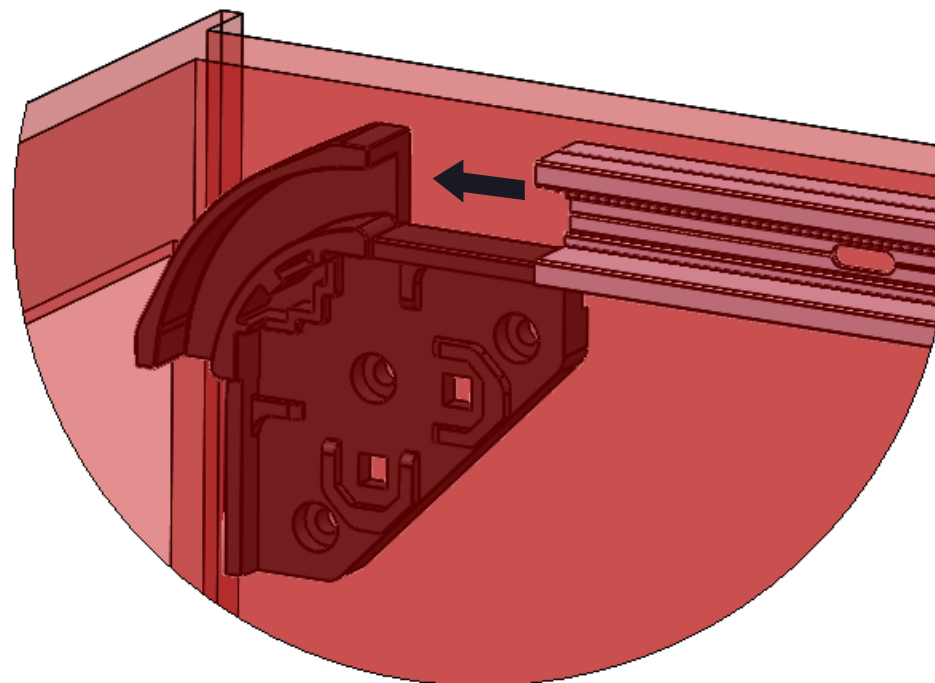
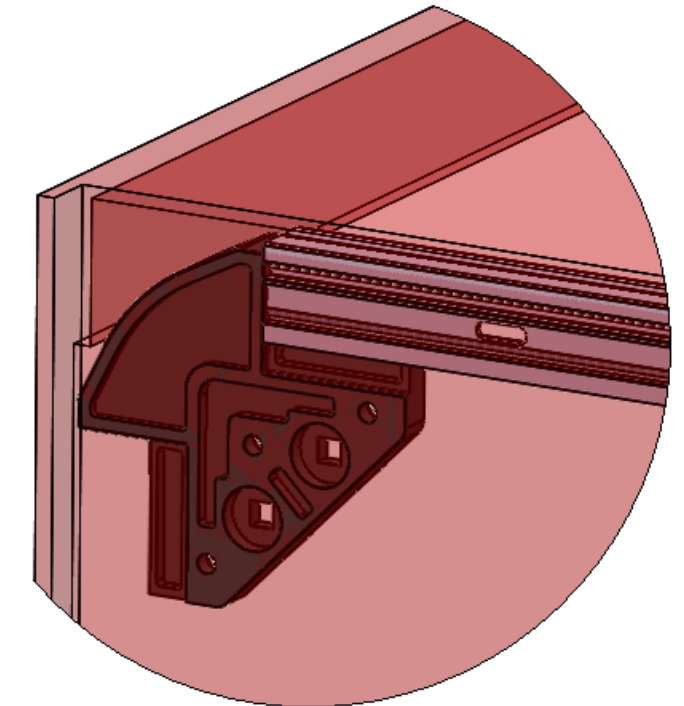


Fig. 5



DETAIL E  
SCALE 1 : 2



DETAIL F  
SCALE 1 : 2.5

#### Step-5: INSTALL HORIZONTAL TRACK ON LEFT SIDE

Slide the Left Horizontal Track flush against the Corner Track Radius and mark holes on compartment wall using holes on Horizontal Track as a guide. Drill holes and secure Left Horizontal Track (Fig. 5 and DETAIL E). Make sure the screw heads are flush and not protruding into door track.

#### Step-6: INSTALL HORIZONTAL TRACK ON RIGHT SIDE

Follow the same procedure as Step-5 to install horizontal track on right side (Fig. 6 and DETAIL F).

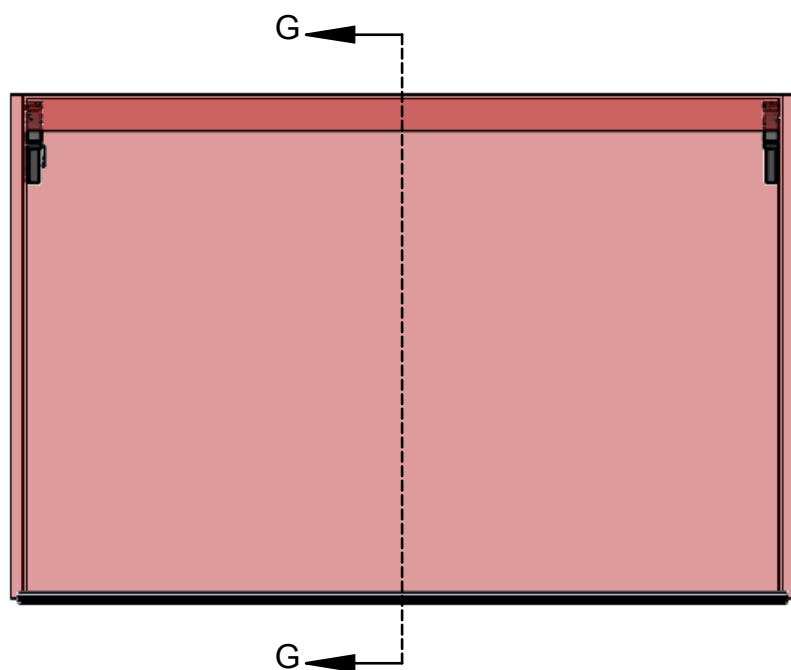
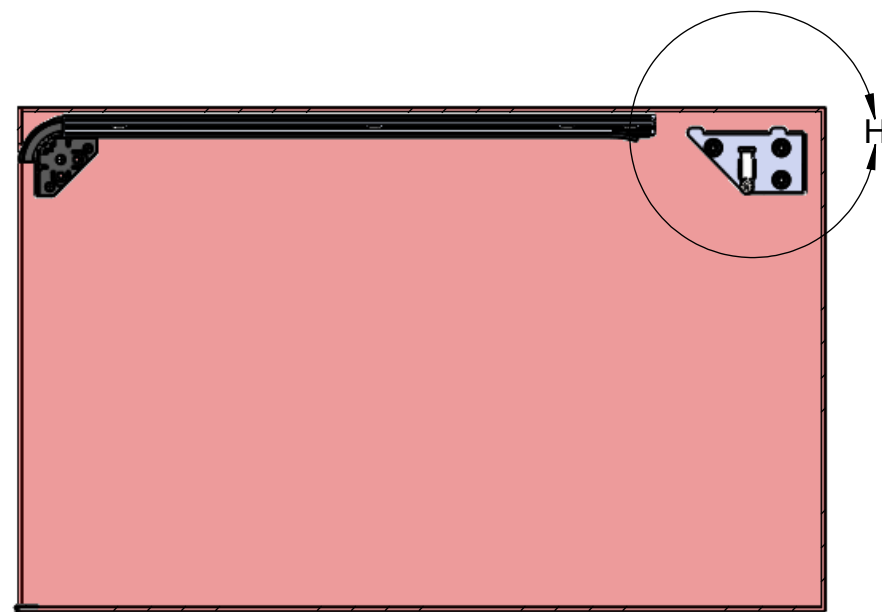
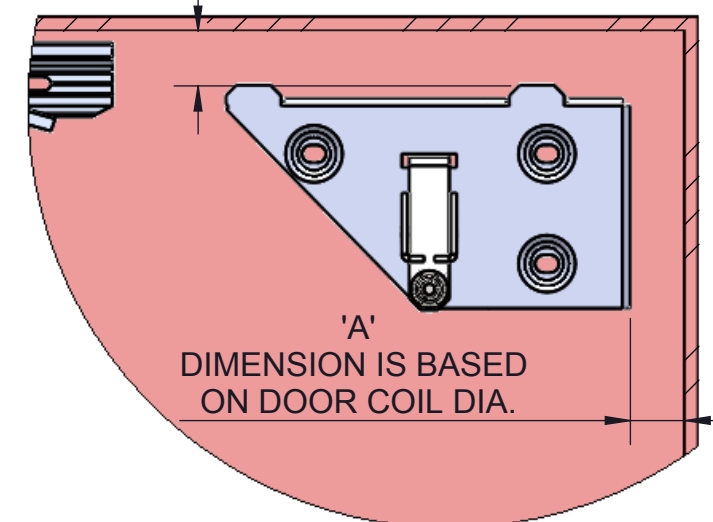


Fig. 7



SECTION G-G  
SCALE 1 : 12

'B'  
DIMENSION IS BASED  
ON DOOR COIL DIA.



'A'  
DIMENSION IS BASED  
ON DOOR COIL DIA.

DETAIL H  
SCALE 1 : 3.5

#### Step-7: INSTALL LEFT SIDE REAR MOUNTING PLATE

Locate distance 'A' and 'B' and place the Left Rear Mounting Plate as shown in section G-G and DETAIL H. Mark the holes using holes on Mounting Plate as pilot holes. Drill the holes and secure the Mounting Plate.

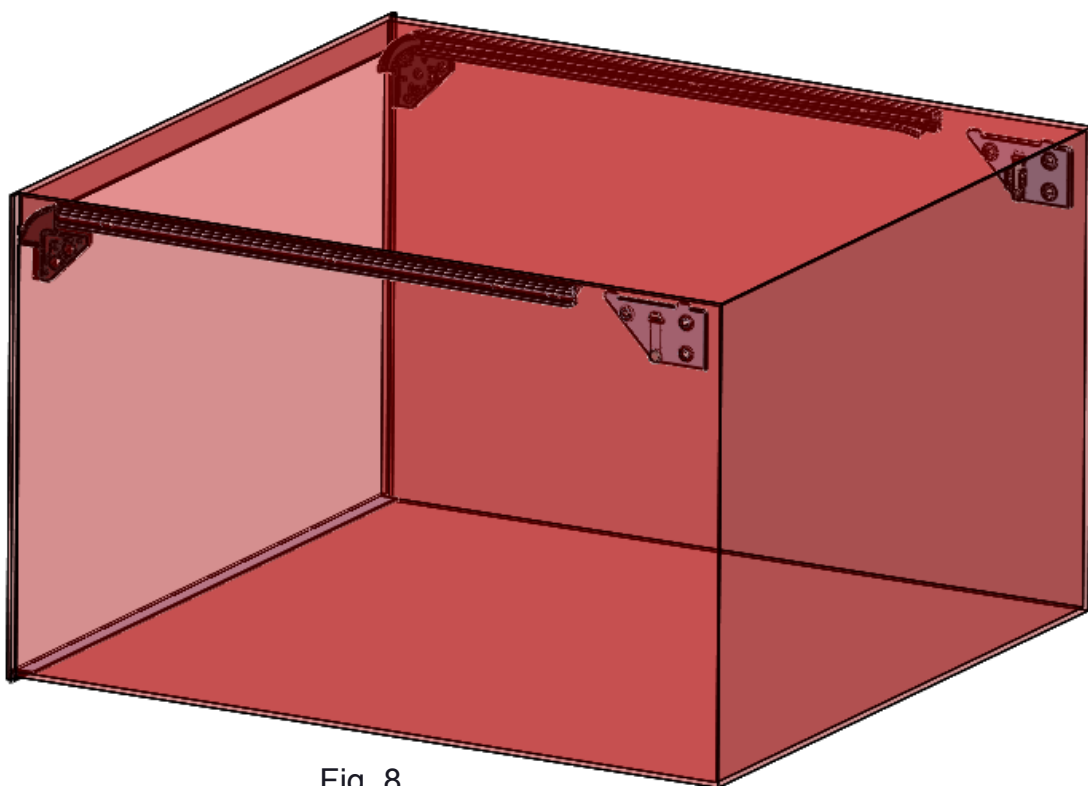


Fig. 8

#### Step-8: INSTALL RIGHT SIDE REAR MOUNTING PLATE

Follow the same procedure as Step-7 to install Right Side Rear Mounting Plate. Follow the same procedure as Step-7 to install Right Side Rear Mounting Plate.

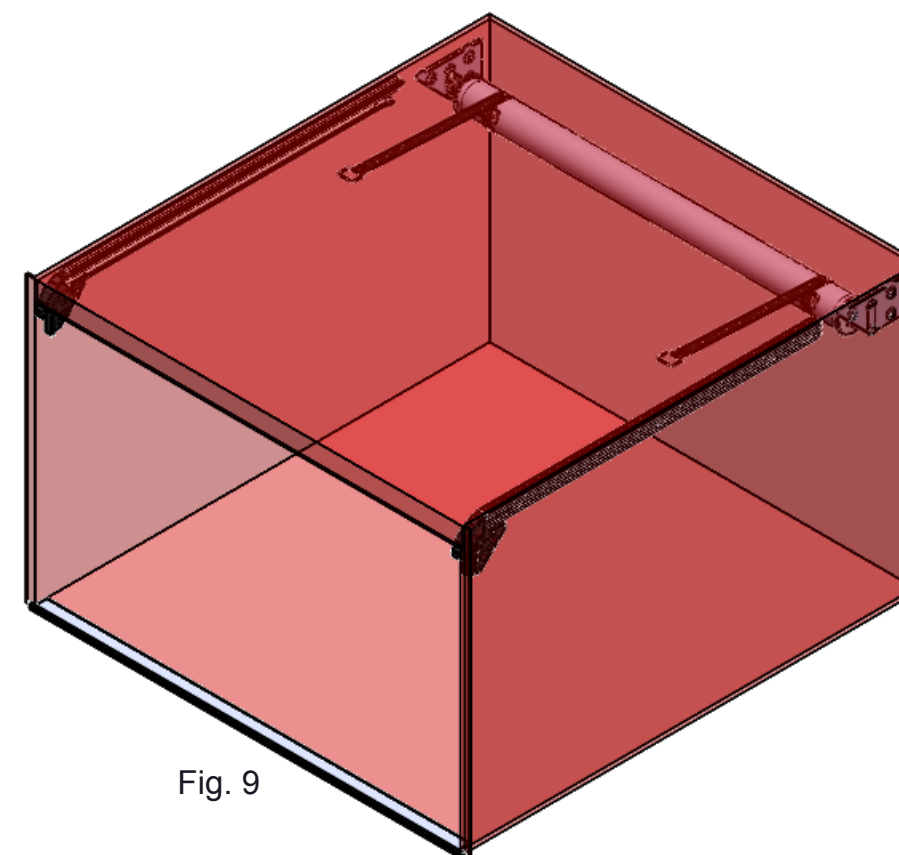


Fig. 9

#### Step-9: INSTALL BALANCER

Place the balancer onto the Rear Mounting Plates. Install cotter pins in holes above shaft on right and through shaft hole on left. Bend cotter pin legs outwards to secure (Fig. 9).



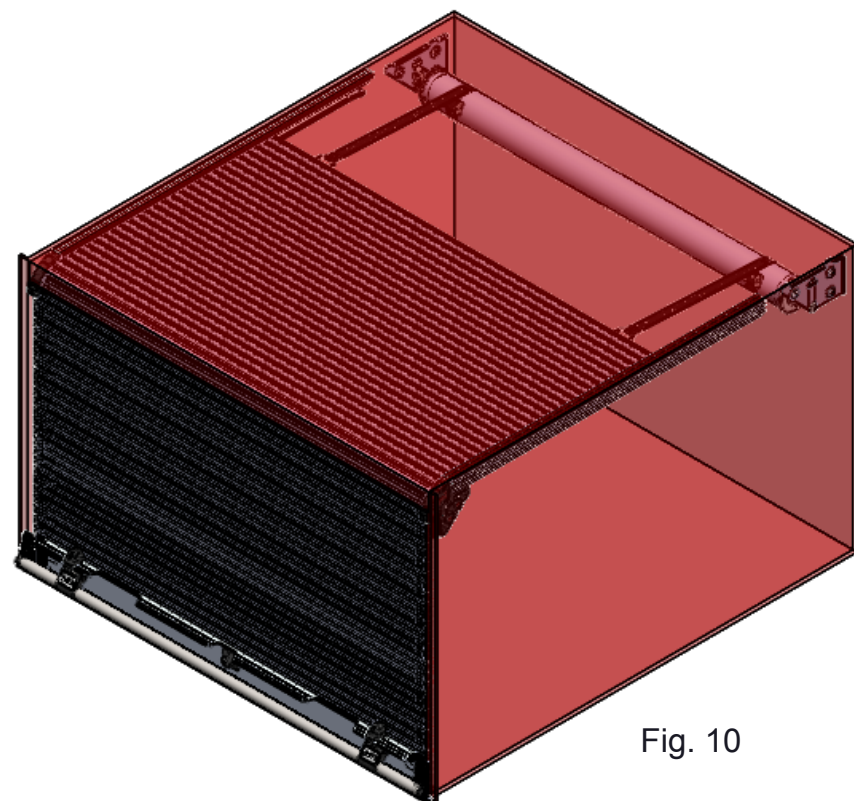
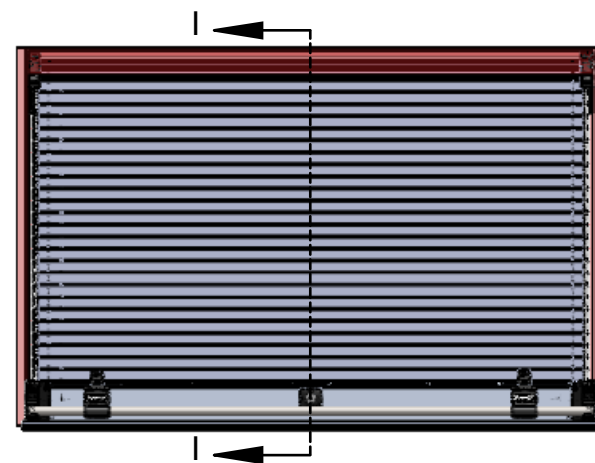
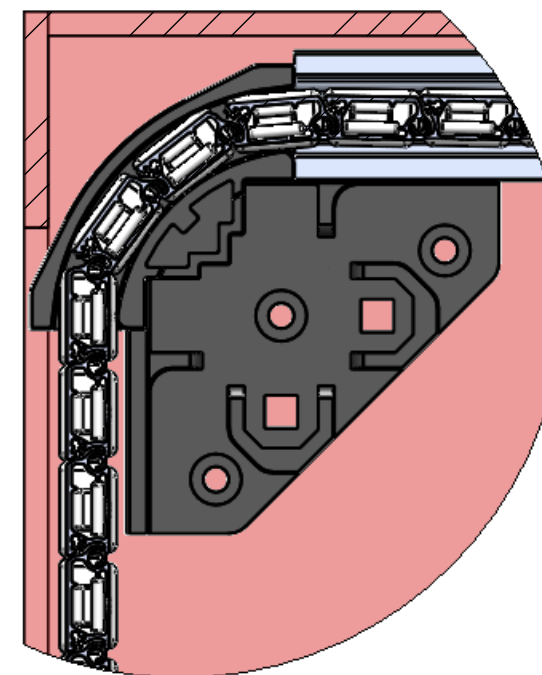


Fig. 10



SECTION I-I



DETAIL J  
SCALE 1 : 2

#### Step-10: INSTALL DOOR CURTAIN

Roll the door curtain through the Corner Track Radius and Horizontal Tracks (Fig. 10, Section I-I and DETAIL J).

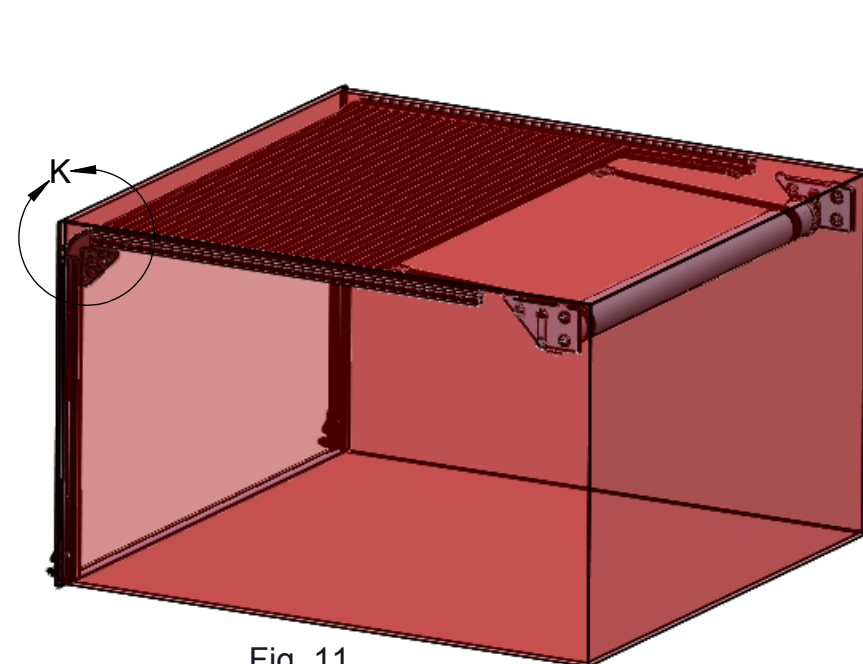
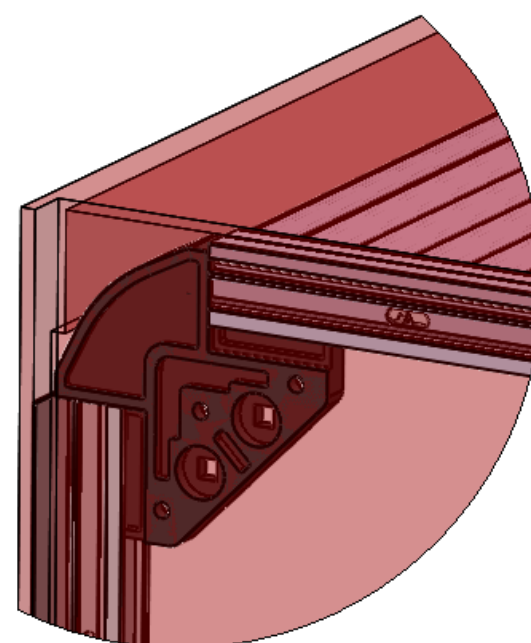


Fig. 11



DETAIL K  
SCALE 1 : 3

#### Step-11: INSTALL SIDE FRAMES

Lift Bottom Panel and slide both Side Frames in place. Ensure that both Side Frames are secured well on the Corner Track Radius (Fig. 11 and DETAIL K). Secure the Side Frames with flat head screws so head does not interfere with door.

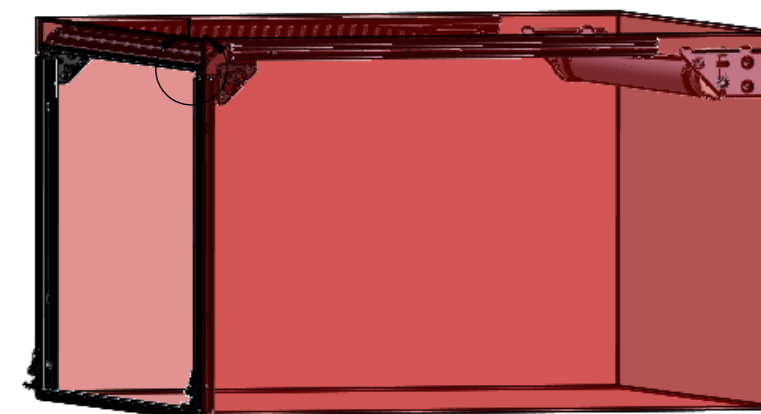
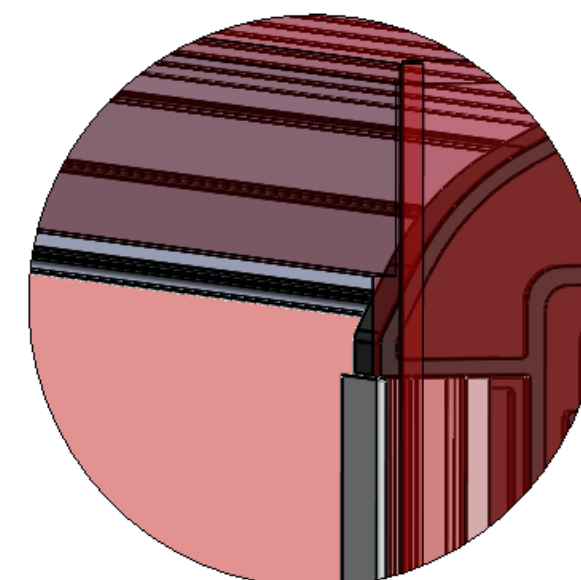


Fig. 12



DETAIL L  
SCALE 1 : 2

#### Step-12: INSTALL TOP GUTTER

Place the Top Gutter onto the top edge of both side frames. Drill holes and secure in place with screws (Fig. 12 and Detail L). Screws should not protrude more than 1/8" into compartment. CAUTION: Do not drill too deep and damage the door. Install top gutter screw cover. Apply low fume, low odor exterior grade adhesive on back face of end caps and insert end caps into each end of screw cover. Insert small lower end plugs.