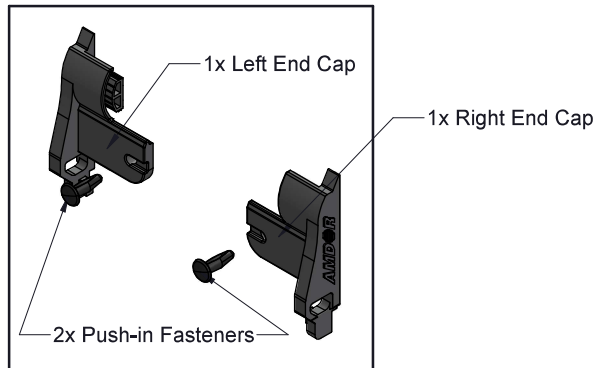


INSTRUCTIONS FOR RETROFITTING TOP GUTTER END CAPS WITH PUSH-IN FASTENERS

IN-1901
08-APR-2019

STEP:1

Remove old top gutter end caps if they are present on the top gutter.

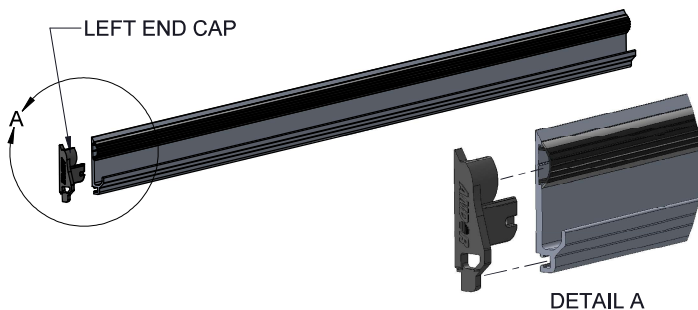


AY-0036

(TOP GUTTER END CAP KIT)

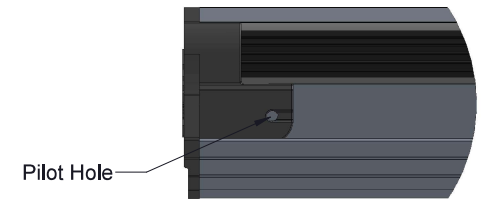
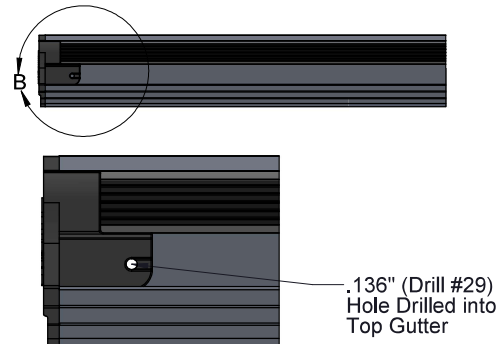
STEP: 2

Remove the replacement top gutter end cap parts from the bag.

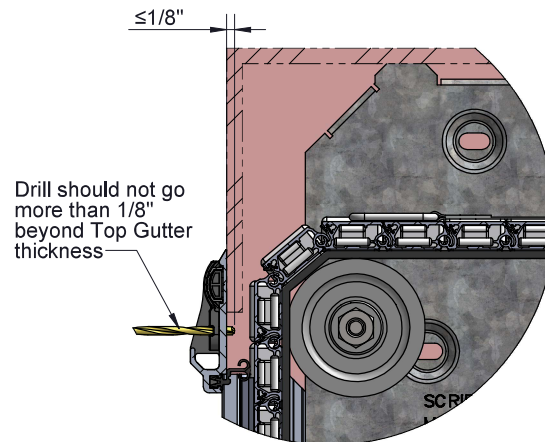


STEP: 3

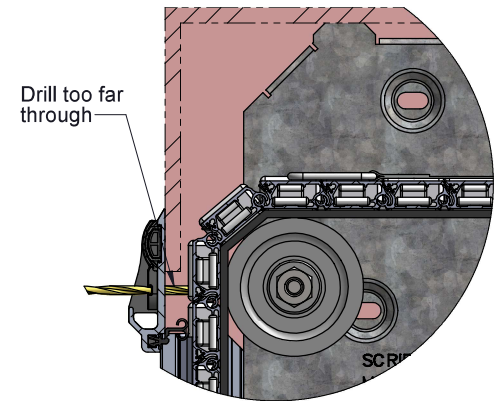
Insert the Left End Cap as shown above in **Detail A**.



DETAIL B



CORRECT



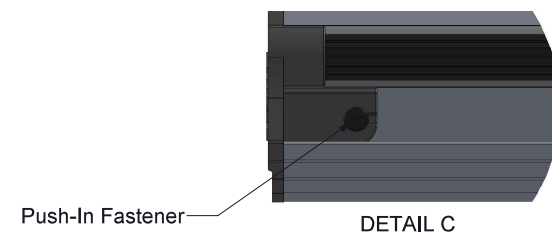
INCORRECT

STEP: 4

Use the hole in End Cap as a pilot hole and drill a through hole carefully using #29 (.136") drill as shown in **Detail B**. Use caution to ensure the drill bit does not go too far through and damage the face of the slat behind the top gutter. Then remove the End Cap and use $\phi 5/32$ " drill bit to make that hole size to .156" in Top Gutter only to receive push-in fastener.

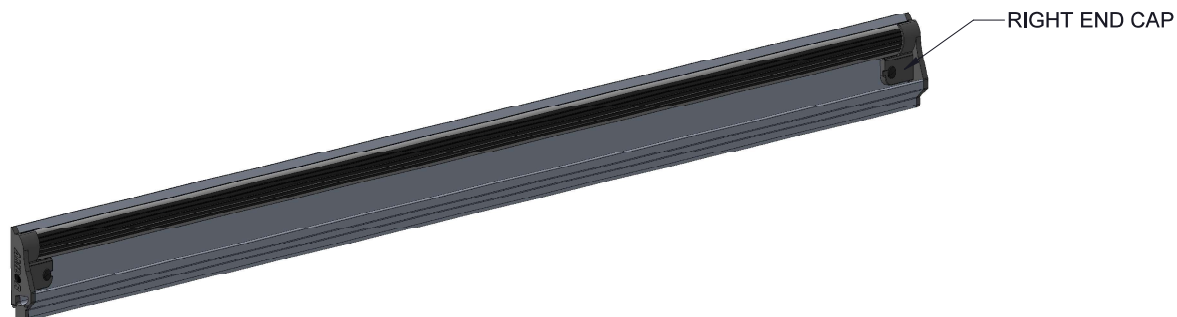
AMD
DOORS - LIGHTS - LIFTING

BURLINGTON, ON LANCASTER, NY
P: 1-877-462-6367
F: 1-877-462-6300



STEP: 5

Insert the Left End Cap back on the Top gutter and then insert push-in fastener through End Cap into that drilled hole. Ensure that the head of the fastener is flush to the end cap.



STEP: 6

Repeat steps 3 to 5 for installing Right End Cap. This will complete the retrofit installation of Top Gutter End Caps with push-in fasteners.